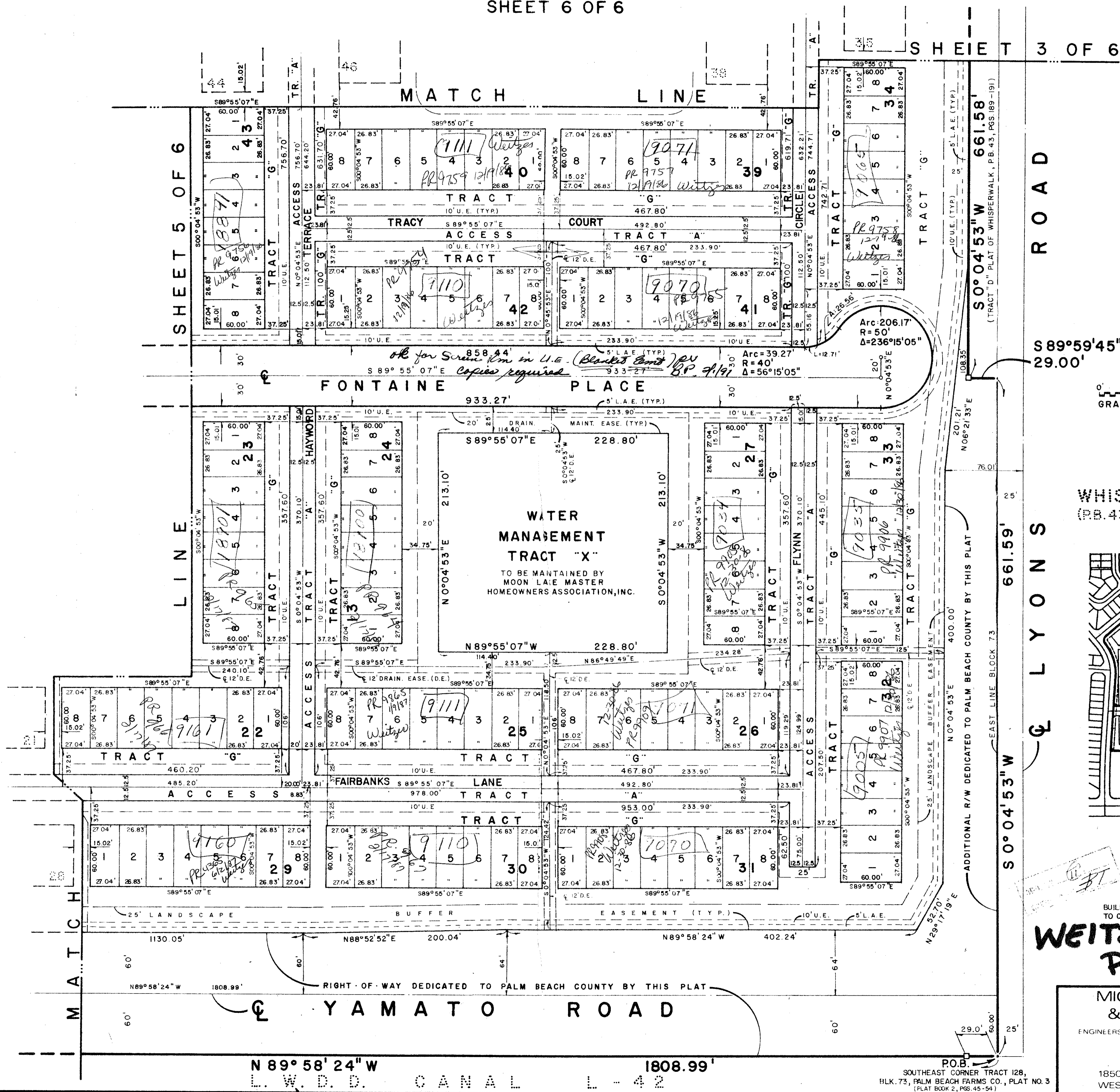


WEITZER SUBDIVISION P.U.D. PLAT NO. THREE

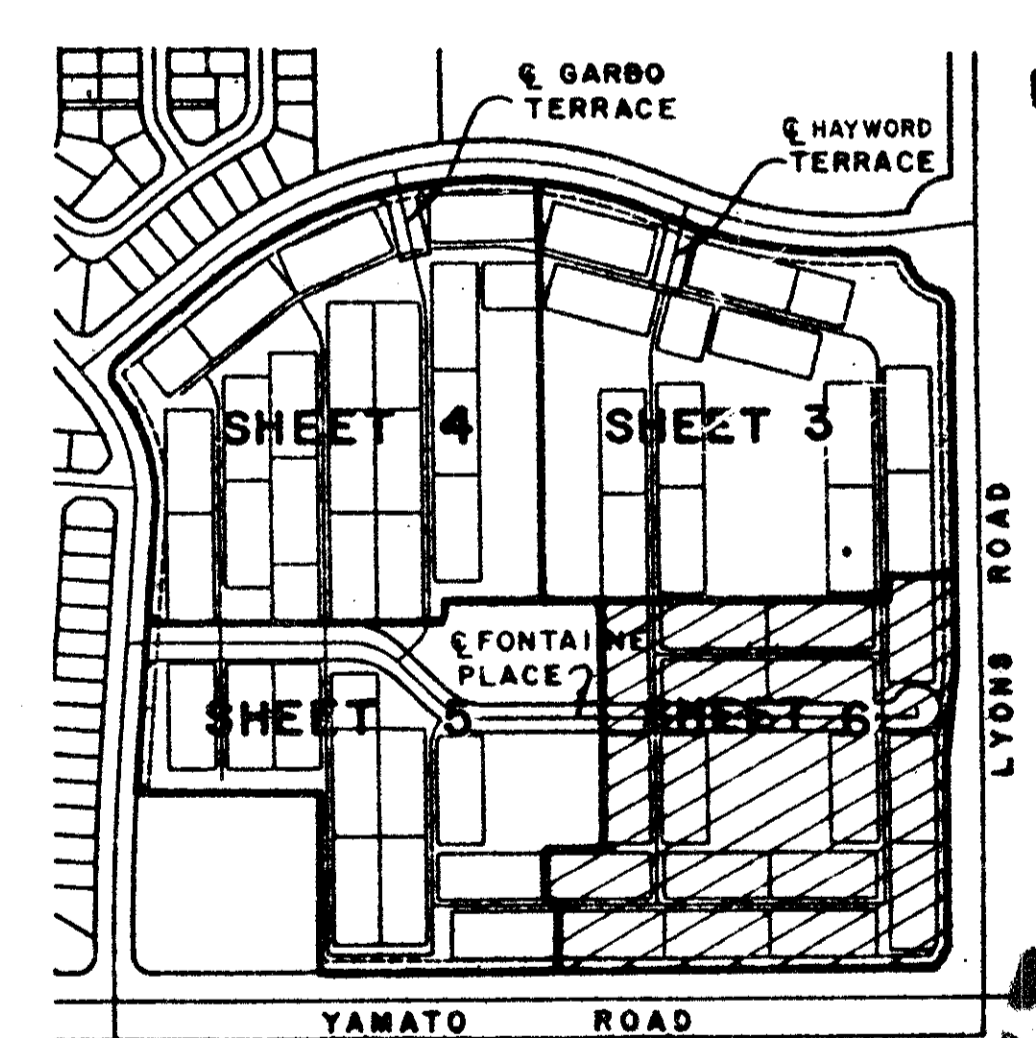
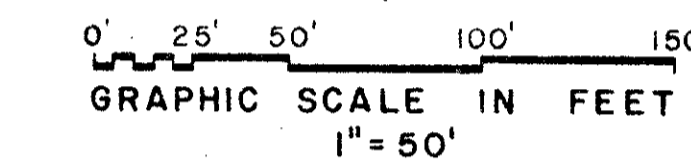
(MOON LAKE P.U.D.)

SHEET 6 OF 6

77



STATE OF FLORIDA
COUNTY OF PALM BEACH
This Plat was filed for record at _____ M. this _____ day of _____ 19____ and duly recorded in Plat Book No. _____ on Page _____
John B. Dunkle, Clerk Circuit Court
By _____ D.C.



0349-003 77

WEITZER SUBDIVISION P.U.D. PLAT #3

MICHAEL B. SCHORAH & ASSOCIATES, INC.
ENGINEERS • PLANNERS • DEVELOPMENT CONSULTANTS

TEL. (305) 968-0080
1850 FOREST HILL BLVD., SUITE 205
WEST PALM BEACH, FLORIDA 33406

DRAWING NUMBER
53/77

DRAWING NUMBER

DRAWING NUMBER

DRAWING NUMBER

53

77

SOUTHEAST CORNER TRACT 128,
BLK. 73, PALM BEACH FARMS CO., PLAT NO. 3
(PLAT BOOK 2, PGS. 43-54)